

(BACKSTAGE)

SUPERMODEL DOODLES DECODED

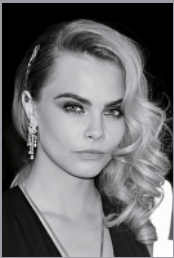
Backstage at the a/w 2014 shows, we asked four big-name models to draw their very own *Stylist* front cover. We passed their sketches over to the British Institute of Graphologists – where they had no idea who our artists were – for their interpretation of what the sketches might actually mean...



BACKSTAGE AT: BURBERRY, LONDON

CARA DELEVINGNE

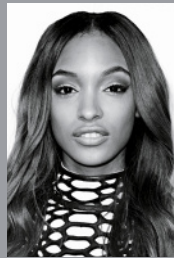
"This is a strong-minded, resourceful woman – the geometric pattern shows she's not afraid of hard work. She chooses clothes that are comfortable rather than fashionable and doesn't give in to peer pressure. The lion's head is telling: she knows her own mind."



BACKSTAGE AT: TOPSHOP UNIQUE, LONDON

JOURDAN DUNN

"She finds safety in her roots and security in what's familiar but never underestimate her – she's streetwise, tough and means business. The bold yet inscrutable expression she's drawn paired with the large capitals indicate there's no messing around with her."



BACKSTAGE AT: DKNY, NEW YORK

ANDREJA PEJIC

"A gutsy, dynamic businesswoman with an individual style and a determined spirit, the large capital C is indicative of a woman who is stylish and uses her appearance to help achieve her wild ambitions. The big hair and eyes show that she wants to be noticed."



BACKSTAGE AT: LACOSTE, NEW YORK

SAM ROLLINSON

"This woman is genuine with a sense of humour and an impulsive nature. She enjoys a challenge but while many doors are open for her, the zigzags indicate she takes time to deliberate. She often feels far from home but her confidence shines through."



COMPILED BY: SAMANTHA FLOWERS PHOTOGRAPHY: REX FEATURES ANALYSIS BY: TRACEY TRUSSELL (HANDRIGHT.CO.UK) IN COLLABORATION WITH DOODLE EXPERT RUTH ROSTRON (DOODLE-DAY.EPILEPSY.ORG.UK/DOODLE-MEANINGS), BOTH GRAPHOLOGISTS AT THE BRITISH INSTITUTE OF GRAPHOLOGISTS IN LONDON (BRITISHGRAPHOLOGY.ORG)